



Tiger Lifting



www.tigerlifting.com

Tiger

Home of the Tiger hoisting range & Tiger subsea lifting products

Tiger SS12 Corrosion Resistant Chain Block



Spark Resistant Option



Main Features

- Fully Corrosion protected body and components
- Range from 500kg – 20000kg
- Over 1000 hours continuous protection
- Corrosion protected load and hand chain
- Marine specific friction discs
- Rugged steel body construction
- Lightweight and portable
- Double cover protection for brake chamber
- Drop forged & heat treated alloy hooks
- Stainless steel fixings and fasteners
- Safe reliable twin pawl mechanical brake
- Guaranteed 2% light load protection
- Heat treated alloy steel triple spur gears and pinion shaft
- -40°C to +50°C Operating temperature range
- Proof tested to 1.5 times rated capacity
- Can be chained to any height of lift to meet your exact requirements
- Marine chain bags available on request
- Individual spares readily available
- Also available with stainless steel load chain or spark resistant hooks
- Meets or exceeds all international standards





Tiger Lifting



www.tigerlifting.com

Tiger

Home of the Tiger hoisting range & Tiger subsea lifting products

Tiger SS12 Chain Block

The SS12 is manufactured from the highest quality steel materials, offering a lightweight, compact and rugged construction, producing an exceptionally strong product resistant to impact damage. With the added advantages of having been fully protected against corrosion using Tiger's OCP "Organic Corrosion Protection" formula that gives over 1000 hours continuous protection under ASTM B117 Salt spray conditions.

The exceptional short head room allows for easy installation where every centimetre must be achieved. Using only the highest quality materials precisely machined in our own factory, the SS12 is the ideal block for salt water use with less maintenance and servicing costs. These units meet and exceed all the requirements within BS EN 13157: 2004+A1:2009, ANSI/ASME B30.16, AS1418.2 and SANS 1594.

Certification:

Each unit comes fully certified with a test certificate or an EC Declaration of Conformity stating compliance with the essential health and safety requirements of the Machinery Directive 2006/42/EC. This document clearly states the proof test at 1.5 times the rated capacity and the light load test of 2% of the rated capacity, which exceeds the requirements of the current applicable standard.

Marine Friction Discs:

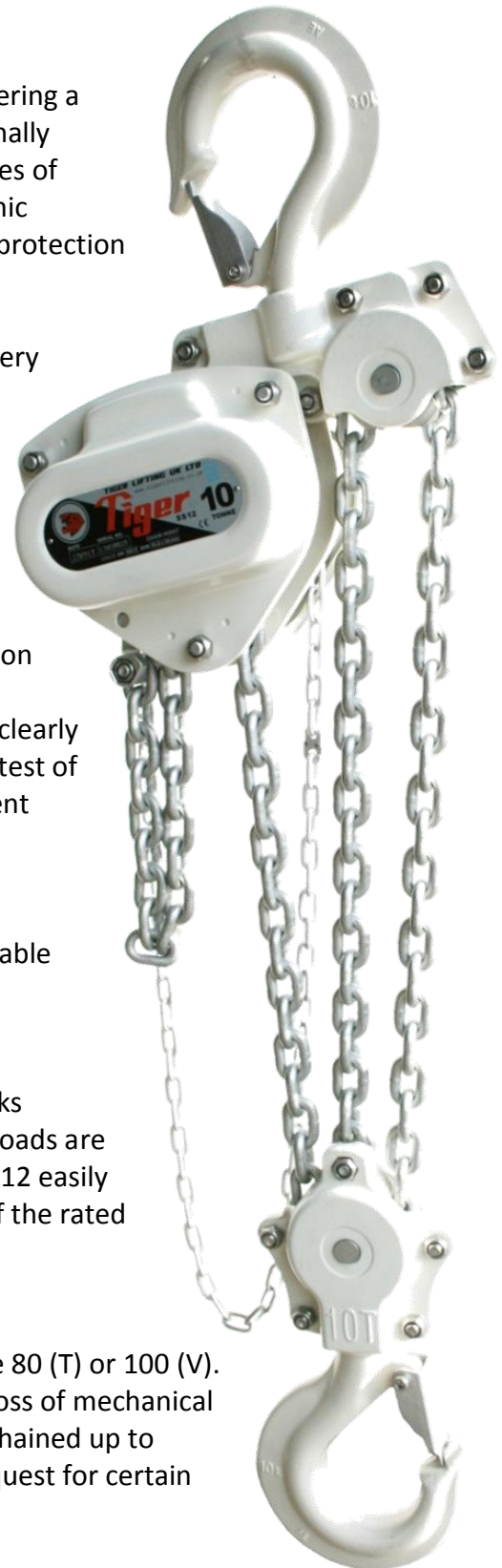
Developed and designed for Subsea use creating a highly efficient, reliable braking surface for use in the most extreme conditions.

Safety Brake:

The highly efficient and fully corrosion protected twin pawl brake works instantly when the operation is stopped and securely holds the load. Loads are lowered under perfect control, allowing for precise operations. The SS12 easily passes the "brake lock out test" as per BS 3243:1990 with a 2% load of the rated capacity.

Load Chains:

Tiger only use the highest quality alloy, calibrated load chains in Grade 80 (T) or 100 (V). These chains have been protected using OCP protection without any loss of mechanical performance. The SS12 comes as 3.0mtr HOL as standard but can be chained up to whatever length is required. Stainless steel load chain available on request for certain capacities.





Tiger Lifting



www.tigerlifting.com

Tiger

Home of the Tiger hoisting range & Tiger subsea lifting products



Hooks:

Drop forged and heat treated alloy hooks are furnished with heavy duty latch kits that fully engage into the nose of the hook offering maximum load security. The swivel hooks are attached to the yoke using high grade nuts & bolts allowing for complete inspection during any statutory inspection or written scheme maintenance. The entire hook fitting has been protected using OCP or stainless steel fixtures and fittings. Also available with spark resistant hooks.



Forgings:

Recessed forgings offer full protection to the load chain anchor bolts on all our bottom hooks.



Protection:

The SS12 has OCP protection on all the internal parts including load and hand chain ensuring over 1000 hours continuous protection.

Finish:

The SS12 is finished in our high quality white Akzo Nobel powder coat paint offering excellent additional corrosion protection. (Data sheets available on request.)

Double Cover Protection:

Both the hand chain wheel cover and the ratchet brake cover are designed to offer protection to the brake chamber in the harshest environments from foreign objects.

High Performance Premium Grease:

Load carrying ability, mechanical stability, corrosion protection, water resistance and increased operating temperature ranges of -40°C to +50°C are all improved by the using only the very best lubricant.

Mechanical Efficiency:

All major components are heat treated and precisely machined to ensure long term smooth operation. High gear ratios keep physical effort to a minimum whilst complying to all the relevant standards.





Tiger Lifting



www.tigerlifting.com

Tiger

Home of the Tiger hoisting range & Tiger subsea lifting products

Performance:

The SS12 has undergone a full test program that includes:

Type Testing

- Ultimate strength test, at least 4 times the Working Load Limit (WLL)
- Continuous cyclic testing of over 1500 cycles
- Chain end anchorage test, passing at least 2.5 times the WLL without any restriction of the brake or gears

Test on every hoist

- Proof loading at 1.5 times the rated capacity
- Light load testing at maximum of 2% rated capacity

Chain Carriers:

All our SS12 chain blocks are available with chain bags on request to fit the exact amount of chain specified. Designed to carry and hold the exact length of load chain required for the operation.

Incorporating a stainless steel frame work and heavy duty PVC flexible bag reinforced by webbing with eyelet drain holes for an easy transfer through the splash zone. These chain bags prevent loose chain from getting snagged during lifting or lowering operations and protect any loose chain during transit to and from the operational site.

Technical Data

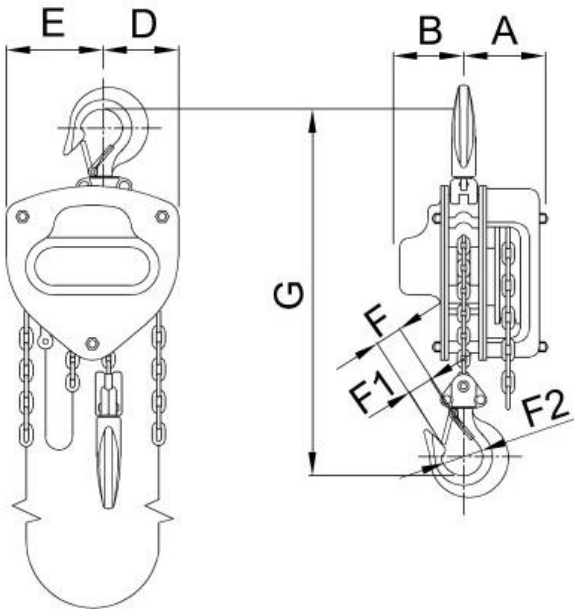
Product Code	Capacity (tonne)	Effort (kg)	Dimensions (mm)								Load Chain		Standard HOL (m)	Mass @ std HOL (kg)	Mass for extra metre HOL (kg)
			A	B	D	E	F	F1	F2	G	Diameter (mm)	No. of falls			
SCB-0050	0.5	21	89	67	50	80	29	25	36	305	ø6.3	1	3	10.8	1.86
SCB-0100	1.0	25	89	67	63	87	33	28	44	340	ø6.3	1	3	11.8	1.86
SCB-0150	1.5	32	93	73	75	105	38	34	48	385	ø7.1	1	3	16.2	2.10
SCB-0200	2.0	34	98	77	85	115	42	35	52	420	ø8.0	1	3	20.0	2.39
SCB-0300	3.0	38	109	84	98	157	40	35	54	550	ø10.0	1	3	30.8	3.17
SCB-0500	5.0	37	98	77	120	210	54	50	68	575	ø8.0	3	3	37.8	5.17
SCB-1000	10.0	40	109	84	153	263	60	54	90	660	ø10.0	3	3	65.0	7.54
SCB-2000	20.0	43	160	90	140	347	90	70	105	1050	ø10.0	6	3	201.0	14.20

See page 6 for more hook information

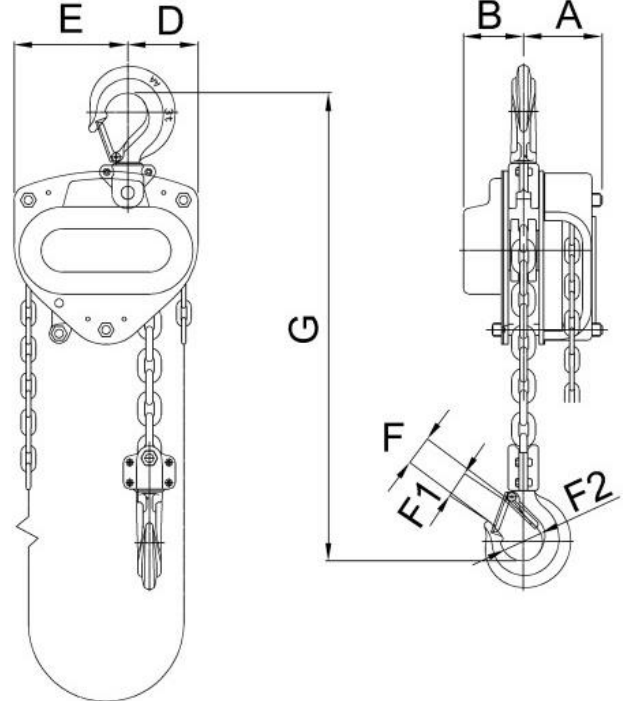




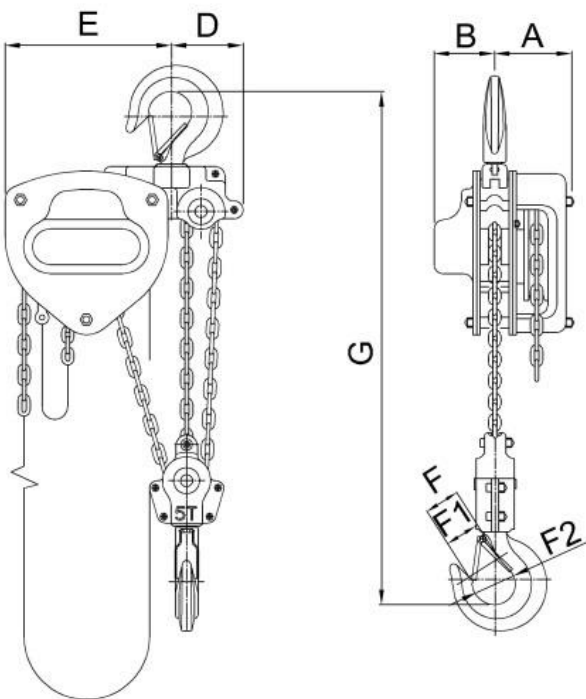
Technical Drawings



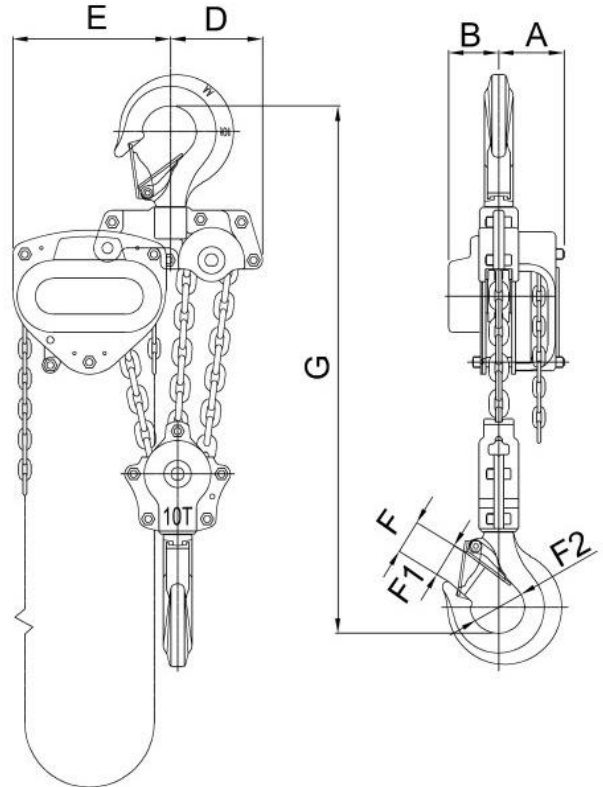
0.5t – 2.0t



3.0t single fall

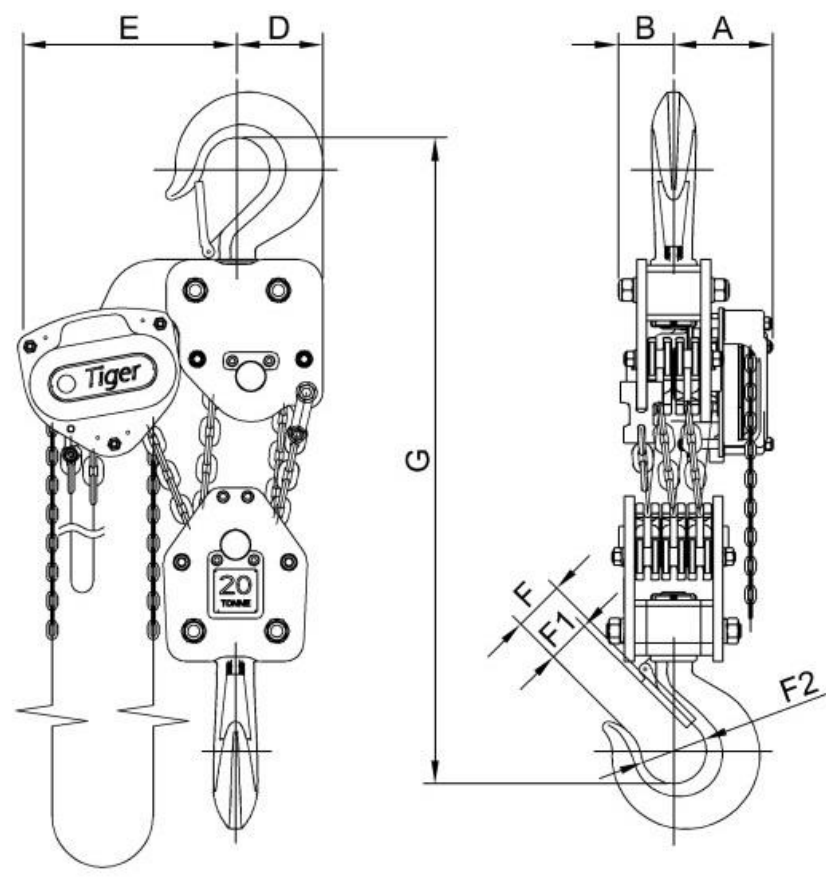


5.0t



10.0t





20.0t

Hook Technical Data

Capacity (Tonnes)	Collar measurements (mm)		Hook thickness at point shown in diagram (mm)		Hook throat Opening (mm)	"EZ Check" measurement (mm)
	a	b	c	d		
0.5	8	13.5	19	15	29	45
1.0	8	13.5	23	17	33	52
1.5	10	15.5	26	21	38	59
2.0	10	17.5	30	22	42	64
3.0	12.5	20	37	32	40	76
5.0	19	30	43	36	54	86
10.0	20	33	52	48	60	121
20.0	-	48	77	72	90	162



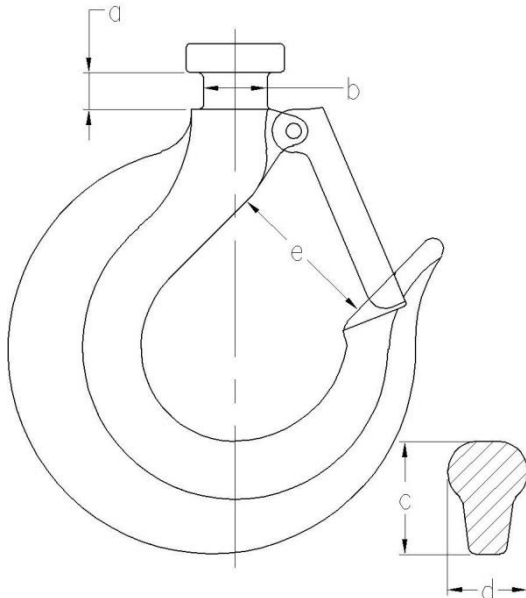


Tiger Lifting

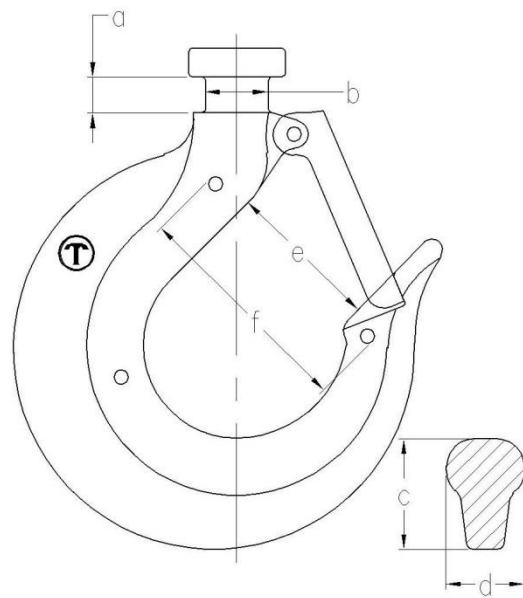


www.tigerlifting.com

Home of the Tiger hoisting range & Tiger subsea lifting products

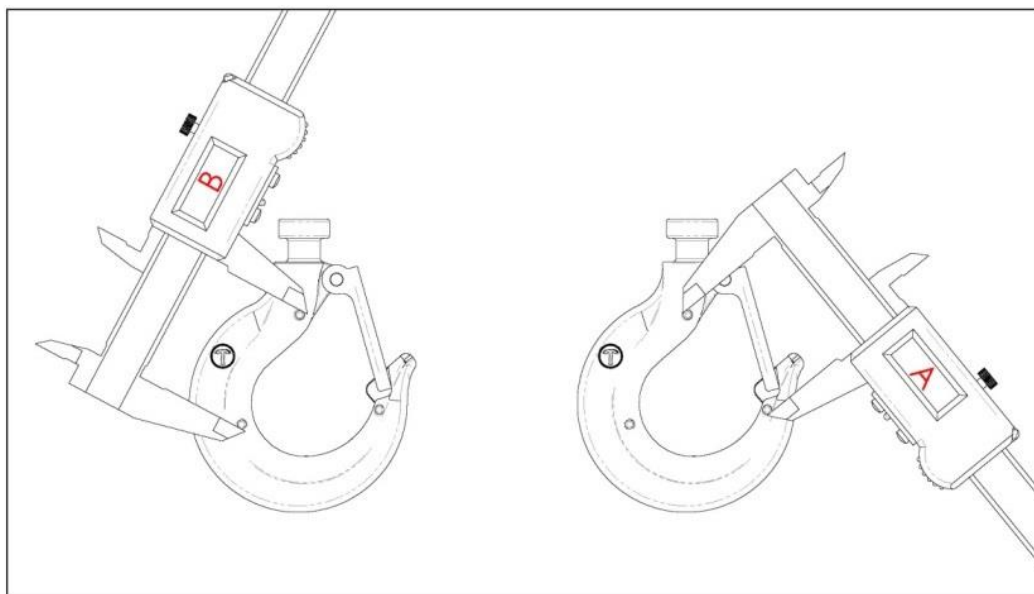


Traditional Tiger Hooks



Tiger Hooks with new "EZ Check"
3 point marking system

Newer models are fitted with the patent pending Tiger "EZ check" 3 point marking system. With this system a quick check that the A and B measurements are the same (as shown in the diagram below) will indicate if the hooks have stretched. If $A \leq B$ the hook is fine; If $A > B$ the hook needs to be replaced:



Due to our policy of continual product development, dimensions, weights and specifications may change without prior notice. Please check with your Tiger sales team when ordering.

