

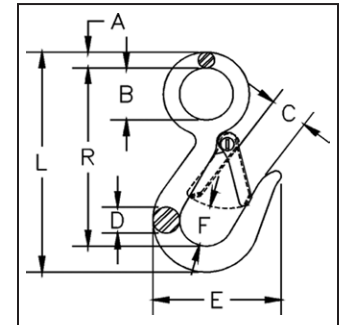
Crosby® Forged Hooks



G-3315



- Forged Carbon Steel -- Quenched and Tempered.
- Pressed steel latches and stainless steel springs, bolts and nuts.
- For replacement latch kit, order Stock No. 9900299.



**G-3315
Snap Hooks**

| Hook Size (mm) | G-3315 Stock No. | Working Load Limit (t)* | Weight Each (kg) | Dimensions (mm) | | | | | | | |
|----------------|------------------|-------------------------|------------------|-----------------|------|------|------|------|------|-----|------|
| | | | | A | B | C | D | E | F | L | R |
| 12 | 1023056 | .34 | .11 | 6.35 | 19.1 | 19.1 | 11.2 | 57.0 | 19.1 | 100 | 82.5 |
| 14 | 1023074 | .45 | .22 | 8.65 | 28.4 | 20.6 | 14.2 | 68.5 | 22.4 | 120 | 97.5 |

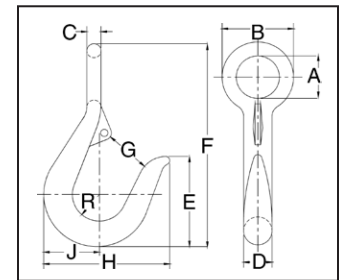
*Ultimate Load is 4 times the Working Load Limit.

1210



**1210
Round Reverse Eye Hook**

- Forged Carbon Steel -- Galvanized.



| Size (mm) | G-3315 Stock No. | Working Load Limit (Tons)* | Weight Each (kg) | Latch Stock No. | Dimensions (mm) | | | | | | | | | |
|-----------|------------------|----------------------------|------------------|-----------------|-----------------|------|------|------|------|-----|------|------|------|------|
| | | | | | A | B | C | D | E | F | G | H | J | R |
| 13 | 919019 | .14 | .18 | 1090027 | 20.6 | 35.1 | 7.10 | 12.7 | 41.1 | 102 | 19.1 | 57.0 | 24.6 | 11.9 |
| 16 | 919037 | .18 | .27 | 1090027 | 23.9 | 39.6 | 7.85 | 15.7 | 51.0 | 114 | 23.9 | 70.0 | 31.0 | 15.0 |
| 19 | 919055 | .31 | .50 | 1090045 | 28.4 | 47.8 | 9.65 | 19.1 | 57.0 | 133 | 26.9 | 76.0 | 36.6 | 17.5 |
| 22 | 919073 | .54 | .73 | 1096468 | 30.2 | 52.5 | 11.2 | 22.4 | 76.0 | 165 | 31.8 | 86.0 | 41.4 | 19.1 |
| 26-28 | 919091 | .82 | .91 | 1090081 | 38.1 | 70.0 | 15.7 | 28.4 | 89.0 | 203 | 38.1 | 111 | 51.0 | 23.9 |
| 31-36 | 919135 | 1.2 | 2.49 | 1090081 | 47.8 | 89.0 | 20.6 | 35.1 | 102 | 232 | 41.1 | 127 | 60.5 | 26.9 |

*Ultimate Load is 4 times the Working Load Limit.



S-377



- Forged Carbon Steel - Quenched and Tempered.
- Meets the performance requirements of Federal Specification RR-C-271E, Type V, Class 6, except for those provisions required of the contractor.

S-377 Barrel Hooks

| Working Load Limit Per Pair (t)* | S-377 Stock No. Per Pair | Weight Each Per Pair (kg) | Dimensions (mm) | | | |
|----------------------------------|--------------------------|---------------------------|-----------------|-------------|----------------|--------------|
| | | | I.D. of Eye | O.D. of Eye | Overall Length | Width of Lip |
| 1 | 1028248 | 1.61 | 39.6 | 71.4 | 127 | 73.2 |

*Ultimate Load is 4 times the Working Load Limit.