

# Beam Clamps

## IPTK



This IPTK series beam clamp is suitable for use as a temporary tackle eye for a beam.

## For the Transfer of Steel Beams and Attachment of Tackle Eye

- Available in capacities of 2 thru 25 metric tons.
- Wide variety of jaw openings available: 75 to 1020mm.
- Welded alloy steel body for strength and smaller size. Forged alloy components, where required.
- Individually Proof Tested to 2 times the Working Load Limit with certification.
- Company name (CrosbyIP), logo, Working Load Limit and jaw opening permanently stamped on body.
- Each product is individually serialized, with the serial number and Proof Load test date stamped on body. Serial number is included on the test certificate with maintenance and warranty logbook.
- Maintenance replacement parts are available.
- Manufactured by a ISO 9001 facility.
- All sizes are **RFID EQUIPPED**.



**Load Rated**

### Model IPTK: With Hoisting Eye

### Model IPTKW: Without Hoisting Eye

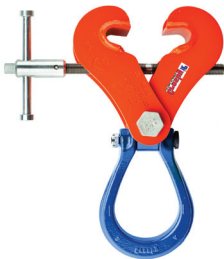
### Model IPTKU: With Hinged Hoisting Eye

## IPTKW



This IPTKW series beam clamp is suitable for use as a temporary tackle eye for a beam.

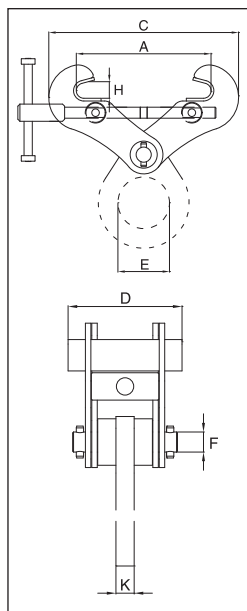
## IPTKU



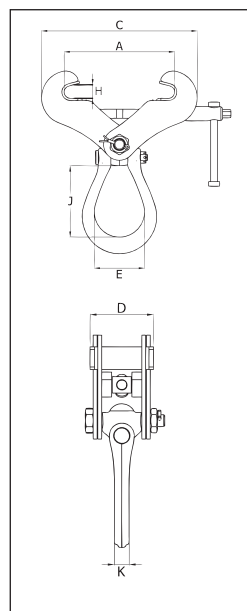
This IPTKU series beam clamp has an improved hinged hoisting eye that increases the loading angles and an optional new "Double Locking Device".

Model	Working Load Limit (t)*	Stock No.	Weight Each (kg.)	Dimensions (mm)							
				Jaw A	C	D	E	F	H	J	K
IPTK	2	2700996	6.0	75 - 190	A + 80	125	75	-	25	-	20
IPTK	3	2700997	6.5	75 - 190	A + 80	125	75	-	25	-	20
IPTK	4	2700998	8.5	150 - 280	A + 100	125	75	-	35	-	20
IPTK	5	2700994	11.0	120 - 350	A + 195	125	75	-	40	-	20
IPTK	10	2700970	31.0	300 - 500	A + 300	171	74	-	40	-	30
IPTK	25	2702999	225	450 - 1020	A + 220	500	125	-	76	-	45
<b>Without Hoisting Eye</b>											
IPTKW	2	2700966	4.0	75 - 190	A + 80	125	-	28	25	-	-
IPTKW	3	2700967	4.5	75 - 190	A + 80	125	-	28	25	-	-
IPTKW	4	2700968	6.3	150 - 280	A + 100	125	-	33	35	-	-
IPTKW	5	2700969	8.8	120 - 350	A + 195	125	-	33	40	-	-
<b>With Improved Hinged Hoisting Eye</b>											
IPTKU	2	2707996	5.8	75 - 190	A + 100	121	76	-	22	99	19
IPTKU	3	2707997	6.5	75 - 190	A + 100	121	89	-	22	122	22
IPTKU	4	2707998	9.9	120 - 280	A + 150	140	89	-	40	122	22
IPTKU	5	2707994	12.0	120 - 350	A + 175	140	89	-	40	122	22
IPTKU	10	2707970	38.0	200 - 460	A + 300	200	105	-	60	152	26
<b>With Optional Double Locking Device</b>											
IPTKU/D	2	2709996	5.8	75 - 190	A + 100	165	89	-	22	99	19
IPTKU/D	3	2709993	6.5	75 - 190	A + 100	165	89	-	22	122	22
IPTKU/D	4	2709995	9.9	120 - 280	A + 150	185	89	-	40	122	22
IPTKU/D	5	2709994	12.0	120 - 350	A + 175	185	89	-	40	122	22
IPTKU/D	10	2709970	38.0	200 - 460	A + 300	250	105	-	60	152	26

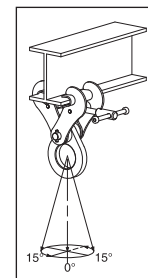
\* Design Factor based on EN 13155 and ASME B30.20.



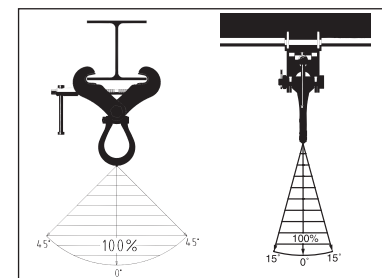
IPTK



IPTKU



IPTKW



IPTKU