

Crosby® Grade 100 Chain Fittings

Fatigue Rated®

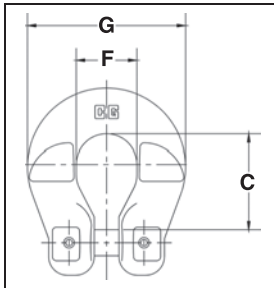
"QT"
QUENCHED & TEMPERED

Crosby 8/10™

S-1325A



- Designed to connect Grade 100 chain fittings produced with "Engineered Flat" to Grade 100 chain.
- Forged Alloy Steel - Quenched and Tempered.
- Suitable for use with Grade 100 and Grade 80 chain.
- Individually Proof Tested to 2-1/2 times the Working Load Limit with certification.
- Locking system that provides for simple assembly and disassembly - no special tools required.
- Fatigue rated at 1-1/2 times the Working Load Limit at 20,000 cycles.
- "Look for the Platinum Color - Crosby Grade 100 Alloy Products."



S-1325A Grade 100 Chain Coupler

Chain Size		S-1325A Stock No.	Working Load Limit (t)*	Weight Each (kg)	Dimensions (mm)		
(in.)	(mm)				C	F	G
-	6	1098496	1.4	.11	26.2	19.3	44.7
1/4	7	1098500	2	.23	35.8	22.4	59.0
5/16	8	1098504	2.6	.23	35.6	22.4	59.0
3/8	10	1098508	4	.34	46.7	30.0	69.0
1/2	13	1098512	6.8	.75	55.6	38.1	94.5
5/8	16	1098516	10.3	.86	71.4	49.8	112

* Minimum Ultimate Load is 4 times the Working Load Limit.

Fatigue Rated®

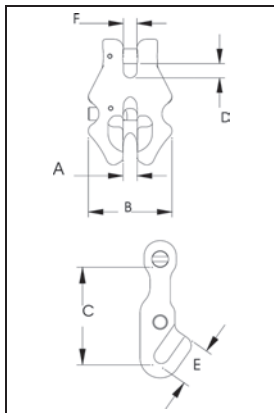
"QT"
QUENCHED & TEMPERED

Crosby 8/10™

S-1311N



- Alloy Steel - Quenched and Tempered.
- Individually Proof Tested to 2-1/2 times the Working Load Limit with certification.
- Suitable for use with Grade 100 and Grade 80 chain.
- Spring loaded chain locking system keeps chain in place under slack conditions
- The use of S-1311 Chain Shortener will allow 100 percent of the chain sling capacity.
- Fatigue rated at 1-1/2 times the Working Load Limit at 20,000 cycles.
- "Look for the Platinum Color - Crosby Grade 100 Alloy Products."



S-1311N Grade 100 Chain Shortener Link

Chain Size		S-1311N Stock No.	Working Load Limit (t)*	Weight Each (kg)	Dimensions (mm)					
(in.)	(mm)				A	B	C	D	E	F
-	6	1017860	1.4	.34	7.61	44.7	46.5	7.37	19.3	7.37
1/4	7	1017869	2	.45	8.64	51.8	55.1	8.64	22.4	8.38
5/16	8	1017878	2.6	.45	10.2	59.9	64.3	9.91	25.7	9.65
3/8	10	1017897	4	.68	12.2	72.1	78.0	12.2	31.2	11.7
1/2	13	1017906	6.8	1.47	15.7	90.4	95.8	15.5	39.9	15.0
5/8	16	1017915	10.3	2.54	18.5	108	118	18.5	48.5	17.8

* Minimum Ultimate Load is 4 times the Working Load Limit.